



Technical Specifications

DIMENSIONS & WEIGHT

- Depth : 30.6 cm
- Width : 26.5 cm
- Height : 7.1 cm
- 3.2 Kg / 7.1 lbs (battery included)

DISPLAY & SOFTWARE

- 8.4" High resolution LCD
- 256 grey levels
- Real veterinarian software
- Evolutive hardware with firmware upgrades (FGPA)

IMAGE MODES

- B-Mode
- B/B Mode
- B/M Mode
- M-Mode
- Focus : 1 focal zone
- Exploration : 5 depths
- Cine review : Frame by Frame, Loop

CONNECTIONS

- Standard video output
- RJ 45 (DICOM)
- USB port
- DVI connection

OPERATOR KEYBOARD

- Touch-pad
- Alphanumeric keyboard

MEASUREMENTS

- Distance
- Area and circumference
- Ellipse
- Back fat and muscle
- Marbling
- Loin eye



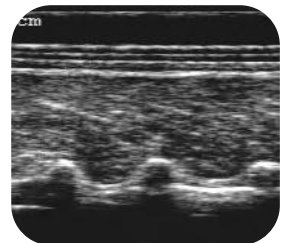
Position of the probe

BATTERY

- Lithium battery
- Working autonomy : 5H30
- Built-in interchangeable battery

STANDARD ACCESSORIES

- Transportation case
- Charger and cable
- Instruction manual
- 250 ml gel flask



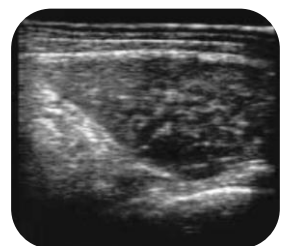
Back fat and muscle measurement

OPTIONS

- Gel pad
- Trolley
- Spare battery

PROBE L3130B

- Frequency : 3.5MHz
- Field of view : 128mm
- Element number : 128
- Element pitch : 1.00mm
- Lens focus : 50mm
- Transverse aperture : 10mm
- Cable length : 2.6m



Loin eye